



PORTABLE & POWERFUL INDUSTRIAL CLEANING EQUIPMENT **HAND PUSH SCRUBBER DRYER**



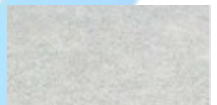
201E
ELECTRIC
DRIVEN
(25M CABLE)

202B
BATTERY
DRIVEN
(12V BATTERY)

**FLOOR BRUSH
SUITABLE FOR**



CERAMIC TILE



CEMENT FLOOR



TERRAZZO



**WEAR RESISTANT
FLOOR**

DACHO hand push scrubber dryers are ideal for efficiently cleaning small to medium-sized areas such as home, pub or restaurant, retail spaces, swimming pools, halls, corridors and various facility floors.

Scrubber dryers offer faster, cost-effective, and thorough floor cleaning compared to manual traditional methods. They save time, cleaning supplies and ensure user safety while being budget-friendly.

These machines are user-friendly and require minimal maintenance. Tailored to various floor types and sizes, our range suite diverse needs whether for small business, restaurant, supermarkets, or production spaces.

DACHO hand push scrubber dryer offers excellent convenience. Its bendable handle allows easy storage in designated spot, while its portability enables effortless movement between locations with vehicle. It comes with two operating power options to select based on individual preference:

- ELECTRIC CABLE : Direct power operated
- BATTERY : For operation flexibility



PORTABLE & POWERFUL INDUSTRIAL CLEANING EQUIPMENT **HAND PUSH SCRUBBER DRYER** **SPECIFICATIONS**

| MODEL | 201E | 202B |
|----------------------------|------------------------|------------------------|
| TOTAL POWER RATE | 550W | 500W |
| VACUUM MOTOR | 200W | 220W |
| SUCTION VACUUM | 500MM H ₂ O | 600MM H ₂ O |
| SHAMPOO TANK (CLEAN) | 11.8 L | 11.6 L |
| RECOVERY TANK (DIRTY) | 13.4 L | 12.9 L |
| SCRUBBING / SQUEEGEE WIDTH | 35 / 47CM | 35 / 47CM |
| CLEANING EFFICIENCY | 1500 M ² /H | 1500 M ² /H |
| BRUSH MOTOR POWER/ SPEED | 300W / 140RPM | 250W / 140RPM |
| OPERATING VOLTAGE/ CHARGER | AC220V (50HZ) | DC12V / 12A |
| WORKING DURATION | N/A | 3 ~ 4 HOURS |
| NET WEIGHT | 41.5 KG | 67.7 KG |

C/W STANDARD ACCESSORIES

- 1X 14" BRUSH PLATE



- 1Pair Squeegee



- 25M POWER CABLE CORD WITH UK 3 PIN PLUG



- 1X 14" BRUSH PLATE



- 1Pair Squeegee



- 1X 12V BATTERY



- 1X 12A CHARGER



MANUAL BOOK



OPERATING VIDEO

